

# JouleAlarm - Multi- Channel Alarm unit for Temperature, Pressure and Humidity with control functions

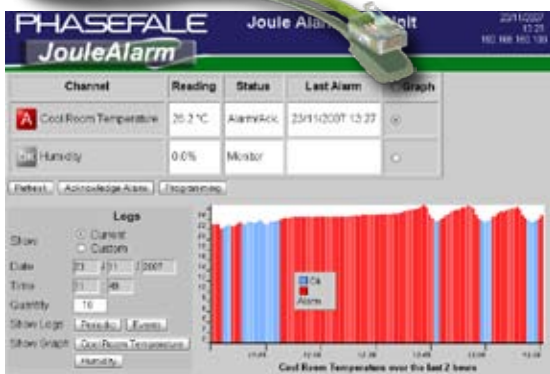
checkout the live demo@  
www.joulealarm.com!



The JouleAlarm is a multi channel alarm and monitoring unit which can accept temperature, pressure, switch contact and humidity inputs. It also includes 3 control channels for basic on/off control as required. With built in browser based software, data logging and an ethernet port, JouleAlarm is the perfect monitoring solution for many environmental control, monitoring and alarm requirements.

## JouleAlarm Features:

- Total 8 Alarm/monitoring inputs + humidity
- 8x Hi & Lo Temperature Alarm\*
- 4x Hi & Lo Pressure\* Alarm psi or bar.
- 8x contact switch Alarm ( n/o or N/c)
- 1x Humidity\* Alarm
- 1x control output assignable included
- 2x optional with Fan Heater board\* control output assignable
- Real time clock with battery
- Time/Date stamped data logging
- **JouleConnect** management software option
- Designed and Manufactured in Australia to international standards
- Alarm buzzer on board.
- Straight, tilt and Panel Mount options
- Email, SMS\* and dial out alarm options
- No software to instal- Browser based
- Status Colour coded temperature graphing
- Event log tracks alarms
- Password protected programming
- Import/Export setup text file.
- \*Temperature, pressure, humidity sensors not included. SMS requires paid email service



JouleAlarm is ideal for HACCP food safety programs

JouleAlarm also available in Panel mount



CONTROL

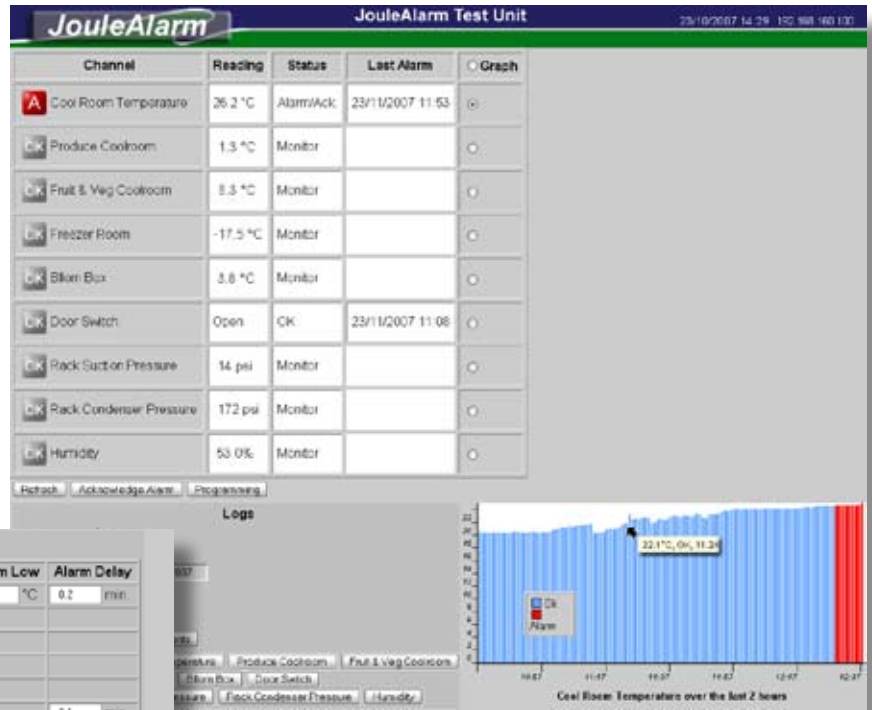
MONITOR

PROTECT

# JouleAlarm software...

The main screen shows Temperature, Pressure, switch and humidity status. The automatic Graph is color coded to quickly recognize alarms etc. Status icons are animated. Any used channel can be graphed.

The program page is password protected where settings are viewed and or changed.



**Normal Settings**

Channel	Description	Function	Alarm High	Alarm Low	Alarm Delay
Channel 1	Cool Room Temperature	Temperature Alarm	24.5 °C	-9.0 °C	0.2 min.
Channel 2	Produce Coolroom	Temperature Monitor			
Channel 3	Fruit & Veg Coolroom	Temperature Monitor			
Channel 4	Freezer Room	Temperature Monitor			
Channel 5	Bliken Box	Temperature Monitor			
Channel 6	Door Switch	Normally Open			0.1 min.
Channel 7	Rack Suction Pressure	LP Monitor			
Channel 8	Rack Condenser Pressure	HP Monitor			

**AA Settings**

Alarm Ack. (AA)  99.0 min.

Temperature Units

Pressure Units

Date Display

Log Period (LOP)  min.

Enable Time and Date Change

Time (24hr:min)

Date (dd/mm/yyyy)

Network IP

Gateway IP

Humidity Function

Humidity Alarm High (HAH)  %RH

Humidity Alarm Low (HAL)  %RH

Humidity Alarm Delay (HAD)  min.

Buzzer Function

**General Settings**

Main Description

Admin Password

Events to Email

Send to Email Address

SMTP Server

Server Requires Authentication

Account

Password

Control Output	Sensor	Ctrln	Outout
C Relay	Not Used	<input type="checkbox"/>	<input type="checkbox"/>
H Relay	Not Used	<input type="checkbox"/>	<input type="checkbox"/>
F Relay	Not Used	<input type="checkbox"/>	<input type="checkbox"/>

Save Settings | Main Page | Network | Maintenance



Phaseale can supply precision Temperature sensors (top left), Pressure Transducers (0-100psi [0-6.9bar] or 0-500 psi [0-34.5bar] top right) and humidity sensor (0-100% 4-20mA industrial grade).

JouleAlarm can also transmit alarms & events via email/SMS\* (\*SMS via email requires paid service)

Date	Time	Event	Cool Room Temperature	Produce Coolroom
23/11/2007	13:23:45	Alarm End	24.4 °C OK	1.3°C Monitor
23/11/2007	13:12:51	Alarm Ack.	25.8 °C ALARM	1.3°C Monitor
23/11/2007	13:10:09	Alarm Start	24.6 °C ALARM	1.3°C Monitor
23/11/2007	13:06:39	Alarm End	24.4 °C OK	1.3°C Monitor
23/11/2007	12:51:58	Alarm Ack.	24.6 °C ALARM	1.3°C Monitor
23/11/2007	12:51:45	Alarm Start	24.6 °C ALARM	1.3°C Monitor
23/11/2007	12:49:45	Alarm End	24.3 °C OK	1.3°C Monitor
23/11/2007	12:36:17	Humidity Function Changed	25.6 °C ALARM	1.3°C Monitor
23/11/2007	12:36:16	Alarm Ack. (AA) Changed	25.6 °C ALARM	Not Used
23/11/2007	12:36:15	Alarm Function 8 (AF8) Changed	25.6 °C ALARM	Not Used

Close



The event logs provide exception reporting and also record general status at the time of the log. Periodic logs provide data which can be exported to Excel.